



瑞特昂五金机电简介

江阴市瑞特昂五金机电有限公司专业从事各种快卸销，定位销，分度销，弹簧柱塞等不锈钢销轴类紧固件。

公司主营：
快卸销,快拔销,快拆销,球锁销,定位销,快速释放销,快速插销,弹簧柱塞,分度销等销轴类紧固件。

公司拥有经验丰富的工程团队，完善的经营管理机制，为国内外许多大型公司做配套服务，客户已遍布中国大陆、欧美、日本、台湾、东南亚等地区。

公司秉承诚信双赢、活力创新的经营理念，以质量第一、服务至上为首要目标，真诚希望与国内外各企业携手共创双赢。

Riteon corp., Ltd. is specialized in processing all kinds of precision mechanical parts and fasteners. Since we have been in this business for several years, we can provide quick release ball lock pins and spring plungers with competitive price and reliable quality.

Main Products:
All kinds of fastener and precision turning parts (quick release pin, ball lock pin, detent pin, self lock pin, positive lock pin, spring plungers, indexing pin, etc.)

We have a experienced engineering team, a integration of management mechanism, and had cooperated with many famous companies of domestic and foreign, our customers have been all over China, Europe and the United States, Japan, Taiwan, Southeast Asia and other regions.

Our company always uphold the business philosophy of integrity, mutual benefit, innovation vitality. Quality First, Service Authoritative is our primary goal, and we sincerely hope that Every enterprises of domestic and foreign to go forward hand in hand in creating a win-win situation.

Thank you for choosing Riteon's.

瑞特昂经营理念:

- 瑞特昂质量
我们的质量体系通过ISO9001:2000
- 瑞特昂交期
我们的生产能保证批量紧急采购
- 瑞特昂价格
我们提供最优 的产品价格
- 瑞特昂服务
我们提供最贴心的售后服务

OPERATION PHILOSOPHY

QUALITY
= **R**eliable

DELIVERY
= **P**romptly

PRICE
= **C**ompetitive

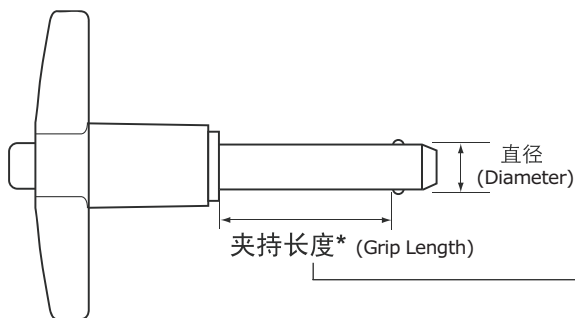
SEVICE
= **f**lexible

江阴市瑞特昂五金机电有限公司 / Riteon Corp., LTd.

快卸销--选型及订购说明 Quick release pins-Selection and Ordering

- | | | | |
|--|---|--|--|
| 1. 选择手柄类型:
• T型, L型, B型(按钮式)
• 重型 T型, L型, 或按钮式
• 拉环式, 吊环式, 插拔式, 或沉钮式
• 双动式 T 型或 L 型 (推/拉操作) | 手柄材料
铝 不锈钢
铝 不锈钢
铝 不锈钢
铝 不锈钢 | Choose Handle Shape and Style:
• T, L, or Button
• Heavy Duty T, L, or Button
• Ring Handle, Lifting Ring or Recessed Button
• Double Acting (Push/Pull) T or L | Material:
Aluminium, Stainless steel
Aluminium, Stainless steel
Aluminium, Stainless steel
Aluminium, Stainless steel |
|--|---|--|--|

- | | |
|--|---|
| 2. 选择插销主体材料
• 各种牌号不锈钢(304,630...), 高强度, 防腐蚀, 耐刮擦
• 各种牌号合金钢, 热处理, 表面镀锌 | Select Pin body Material:
Stainless Steel(304, 630...) for highest strength, corrosion and scratch resistance
Alloy Steel heat treated with Zinc plating |
|--|---|



*夹持长度从紧钢珠上沿起测量
标准夹持长度: 1/2到6英寸(公制10到100 mm)
可根据您的要求定制特殊夹持长度

*Grip length is measured to edge of locking ball
Standard Grip Lengths: 1/2"-6"
Special Grip Lengths available on request

3. 选择插销主体直径及夹持长度 Select Pin body Material:

公制

标准直径		双向抗剪力	
		不锈钢 (kN)	合金钢 (kN) 表面可镀锌
直径	最小 / 最大 (mm)		
5 mm	4.92/4.96	12	15
6 mm	5.92/5.96	18	23
8 mm	7.92/7.96	33	42
10 mm	9.92/9.96	50	65
12 mm	11.92/11.96	74	96
16 mm	15.92/15.96	129	167
20 mm	19.92/19.96	201	261
25 mm	24.92/24.96	316	410

以上数据仅供参考
All above, just for reference.

Inch

Diameter		Double Shear Resistance	
		Stainless steel (lbs)	Alloy steel (Zinc Plated) (lbs)
Nominal	Min/Max (Inches)		
3/16"	0.1870/0.1885	2580	3354
1/4"	0.2470/0.2485	4600	5980
5/16"	0.3095/0.3110	7700	10010
3/8"	0.3720/0.3735	10350	13455
7/16"	0.4345/0.4360	14250	18525
1/2"	0.4970/0.4985	18450	23985
9/16"	0.5595/0.5610	23350	30355
5/8"	0.6220/0.6235	28900	37570
3/4"	0.7470/0.7485	41600	54080
7/8"	0.8720/0.8735	56250	73125
1"	0.9970/0.9985	73600	95680

以上数据仅供参考
All above, just for reference.

4. 从各页的件号表中, 根据需要的直径和夹持长度找到相应的产品件号.

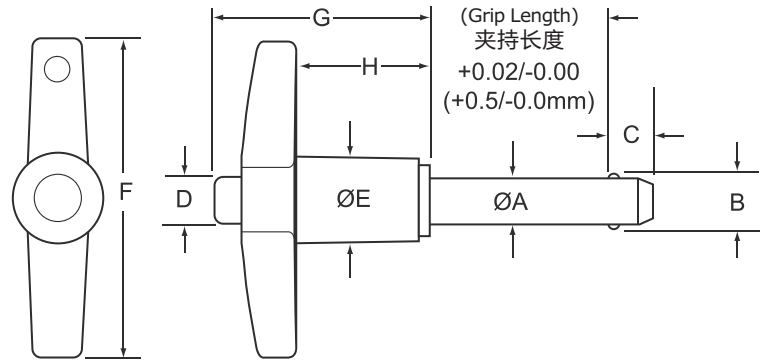
Locate standard part numbers from charts on catalog by diameter and grip length.

- | | |
|---|---|
| 5. 选择系索:
选择系索长度
选择吊牌类型
指定系索是直接连在插销手柄上还是通过开口环连到插销手柄上 | Select lanyards and tabs:
Specify length of cable (Stainless Steel) with Nylon Jacket.
Choose tab style, material
Specify if lanyard is to be crimped to pin without split ring |
|---|---|

江阴市瑞特昂五金机电有限公司 / Riteon Corp., LTd.

T型快卸销

T-Handle Quick release pins



T形手柄 / T-Handle Specifications-英制(Inch)

Diameter	ØA		+/-0.005 B	+0.00/ -0.04 C	D	E	F	G	H
	Min	Max							
3/16	.1870	.1885	.220	.260	1/4	1/2	1 13/16	1 1/4	3/4
1/4	.2470	.2485	.289	.290	1/4	1/2	1 13/16	1 1/4	3/4
5/16	.3095	.3110	.375	.330	1/4	1/2	1 13/16	1 1/4	3/4
3/8	.3720	.3735	.440	.365	5/16	19/32	2	1 7/16	15/16
7/16	.4345	.4360	.509	.380	5/16	19/32	2	1 7/16	15/16
1/2	.4970	.4985	.594	.460	15/32	3/4	2	1 5/8	1
9/16	.5595	.5610	.666	.510	15/32	3/4	2 3/8	1 5/8	1
5/8	.6220	.6235	.750	.580	9/16	15/16	3 1/8	1 31/32	1 3/16
3/4	.7470	.7485	.887	.670	5/8	15/16	3 1/8	1 31/32	1 3/16
7/8	.8720	.8735	1.046	.760	3/4	1 1/4	3 1/2	2 1/4	1 11/32
1	.9970	.9985	1.209	.890	3/4	1 1/4	3 1/2	2 1/4	1 11/32

- The T-Handle pins provides a firm, even grip for smooth comfortable operation.
- Handle is black cast aluminum and the button is brass.
- Pin body available in:
Stainless steel
Alloy steel

- Includes hole and split ring for easy attachment of optional lanyard.

Because we have several different size moulds of handle, so the handle dimensions of above are just for reference. If you have special requirements about the handle dimensions, please notice to us in advance, thanks!

T形手柄 / T-Handle Specifications-公制(Metric)

插销 直径	ØA		+/-0.25 B	+0.0/ -1.0 C	D	E	F	G	H
	最小	最大							
5	4.92	4.96	5.54	6	6.5	13.1	46.1	31.3	19.7
6	5.92	5.96	6.99	7	6.5	13.1	46.1	31.3	19.7
8	7.92	7.96	9.42	8	6.5	13.1	46.1	31.3	19.7
10	9.92	9.96	11.86	9	7.7	15.0	51.1	36.1	24.0
12	11.92	11.96	14.45	10	11.1	19.1	59.7	41.9	25.8
16	15.92	15.96	19.00	14	14.5	23.9	78.7	49.8	30.1
20	19.92	19.96	24.08	17	26.2	23.9	78.7	49.8	30.1
25	24.92	24.96	30.94	22	26.2	32.0	88.9	55.9	33.9

尺寸单位为毫米

因工厂手柄模具有多套,无法全部列出,故以上手柄部位的尺寸仅供参考,以实际装配的手柄尺寸为准。如对手柄尺寸有特殊要求,请在采购前告知我们。

江阴市瑞特昂五金机电有限公司 / Riteon Corp., LTd.

T型手柄 / T-Handle Specifications-英制(Inch)

Diameter	Grip Length (Inch)												
	0.5	0.75	1	1.25	1.5	1.75	2	2.5	3	4	5	6	
不锈钢 Stainless Steel													
件号 PART NUMBERS	3/16	18ST05	18ST075	18ST10	18ST125	18ST15	18ST175	18ST20	18ST25	18ST30	18ST40	18ST50	18ST60
	1/4	25ST05	25ST075	25ST10	25ST125	25ST15	25ST175	25ST20	25ST25	25ST30	25ST40	25ST50	25ST60
	5/16	31ST05	31ST075	31ST10	31ST125	31ST15	31ST175	31ST20	31ST25	31ST30	31ST40	31ST50	31ST60
	3/8	37ST05	37ST075	37ST10	37ST125	37ST15	37ST175	37ST20	37ST25	37ST30	37ST40	37ST50	37ST60
	7/16	43ST05	43ST075	43ST10	43ST125	43ST15	43ST175	43ST20	43ST25	43ST30	43ST40	43ST50	43ST60
	1/2	50ST05	50ST075	50ST10	50ST125	50ST15	50ST175	50ST20	50ST25	50ST30	50ST40	50ST50	50ST60
	9/16	56ST05	56ST075	56ST10	56ST125	56ST15	56ST175	56ST20	56ST25	56ST30	56ST40	56ST50	56ST60
	5/8	62ST05	62ST075	62ST10	62ST125	62ST15	62ST175	62ST20	62ST25	62ST30	62ST40	62ST50	62ST60
	3/4	75ST05	75ST075	75ST10	75ST125	75ST15	75ST175	75ST20	75ST25	75ST30	75ST40	75ST50	75ST60
	7/8	87ST05	87ST075	87ST10	87ST125	87ST15	87ST175	87ST20	87ST25	87ST30	87ST40	87ST50	87ST60
	1	100ST05	100ST075	100ST10	100ST125	100ST15	100ST175	100ST20	100ST25	100ST30	100ST40	100ST50	100ST60
	合金钢 Alloy Steel												
	3/16	18AT05	18AT075	18AT10	18AT125	18AT15	18AT175	18AT20	18AT25	18AT30	18AT40	18AT50	18AT60
	1/4	25AT05	25AT075	25AT10	25AT125	25AT15	25AT175	25AT20	25AT25	25AT30	25AT40	25AT50	25AT60
	5/16	31AT05	31AT075	31AT10	31AT125	31AT15	31AT175	31AT20	31AT25	31AT30	31AT40	31AT50	31AT60
	3/8	37AT05	37AT075	37AT10	37AT125	37AT15	37AT175	37AT20	37AT25	37AT30	37AT40	37AT50	37AT60
7/16	43AT05	43AT075	43AT10	43AT125	43AT15	43AT175	43AT20	43AT25	43AT30	43AT40	43AT50	43AT60	
1/2	50ST05	50ST075	50ST10	50ST125	50ST15	50ST175	50ST20	50ST25	50ST30	50ST40	50ST50	50ST60	
9/16	56AT05	56AT075	56AT10	56AT125	56AT15	56AT175	56AT20	56AT25	56AT30	56AT40	56AT50	56AT60	
5/8	62AT05	62AT075	62AT10	62AT125	62AT15	62AT175	62AT20	62AT25	62AT30	62AT40	62AT50	62AT60	
3/4	75AT05	75AT075	75AT10	75AT125	75AT15	75AT175	75AT20	75AT25	75AT30	75AT40	75AT50	75AT60	
7/8	87AT05	87AT075	87AT10	87AT125	87AT15	87AT175	87AT20	87AT25	87AT30	87AT40	87AT50	87AT60	
1	100AT05	100AT075	100AT10	100AT125	100AT15	100AT175	100AT20	100AT25	100AT30	100AT40	100AT50	100AT60	

Contact customer service for other sizes. Includes attachment ring.

T型手柄 / T-Handle Specifications-公制(Metric)

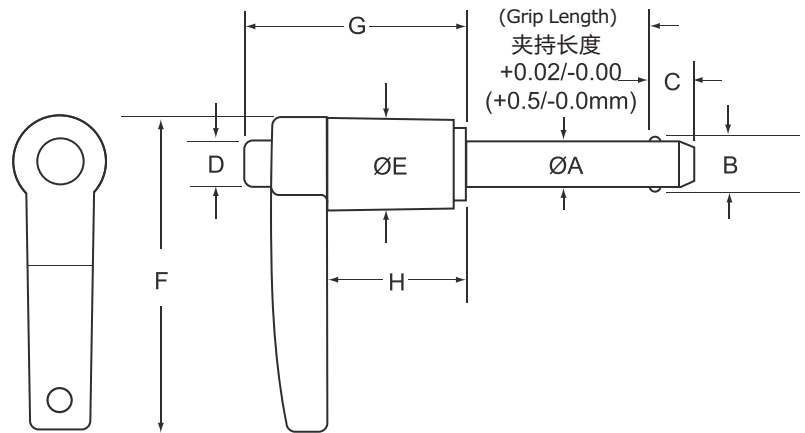
插销直径	夹持长度(毫米)												
	10	15	20	25	30	40	50	60	70	80	90	100	
不锈钢 Stainless Steel													
件号 PART NUMBERS	5	M5ST10	M5ST15	M5ST20	M5ST25	M5ST30	M5ST40	M5ST50	M5ST60	M5ST70	M5ST80	M5ST90	M5ST100
	6	M6ST10	M6ST15	M6ST20	M6ST25	M6ST30	M6ST40	M6ST50	M6ST60	M6ST70	M6ST80	M6ST90	M6ST100
	8	M8ST10	M8ST15	M8ST20	M8ST25	M8ST30	M8ST40	M8ST50	M8ST60	M8ST70	M8ST80	M8ST90	M8ST100
	10	M10ST10	M10ST15	M10ST20	M10ST25	M10ST30	M10ST40	M10ST50	M10ST60	M10ST70	M10ST80	M10ST90	M10ST100
	12	M12ST10	M12ST15	M12ST20	M12ST25	M12ST30	M12ST40	M12ST50	M12ST60	M12ST70	M12ST80	M12ST90	M12ST100
	16	M16ST10	M16ST15	M16ST20	M16ST25	M16ST30	M16ST40	M16ST50	M16ST60	M16ST70	M16ST80	M16ST90	M16ST100
	20	M20ST10	M20ST15	M20ST20	M20ST25	M20ST30	M20ST40	M20ST50	M20ST60	M20ST70	M20ST80	M20ST90	M20ST100
	25	M25ST10	M25ST15	M25ST20	M25ST25	M25ST30	M25ST40	M25ST50	M25ST60	M25ST70	M25ST80	M25ST90	M25ST100
合金钢 Alloy Steel													
5	M5AT10	M5AT15	M5AT20	M5AT25	M5AT30	M5AT40	M5AT50	M5AT60	M5AT70	M5AT80	M5AT90	M5AT100	
6	M6AT10	M6AT15	M6AT20	M6AT25	M6AT30	M6AT40	M6AT50	M6AT60	M6AT70	M6AT80	M6AT90	M6AT100	
8	M8AT10	M8AT15	M8AT20	M8AT25	M8AT30	M8AT40	M8AT50	M8AT60	M8AT70	M8AT80	M8AT90	M8AT100	
10	M10AT10	M10AT15	M10AT20	M10AT25	M10AT30	M10AT40	M10AT50	M10AT60	M10AT70	M10AT80	M10AT90	M10AT100	
12	M12AT10	M12AT15	M12AT20	M12AT25	M12AT30	M12AT40	M12AT50	M12AT60	M12AT70	M12AT80	M12AT90	M12AT100	
16	M16AT10	M16AT15	M16AT20	M16AT25	M16AT30	M16AT40	M16AT50	M16AT60	M16AT70	M16AT80	M16AT90	M16AT100	
20	M20AT10	M20AT15	M20AT20	M20AT25	M20AT30	M20AT40	M20AT50	M20AT60	M20AT70	M20AT80	M20AT90	M20AT100	
25	M25AT10	M25AT15	M25AT20	M25AT25	M25AT30	M25AT40	M25AT50	M25AT60	M25AT70	M25AT80	M25AT90	M25AT100	

需要其他公制尺寸请联系客户服务部门。产品包含开口环

江阴市瑞特昂五金机电有限公司 / Riteon Corp., LTd.

L型快卸销

L-Handle Quick release pins



L形手柄 / L-Handle Specifications-英制(Inch)

Diameter	ØA		+/-0.005 B	+0.00/ -0.04 C	D	E	F	G	H
	Min	Max							
3/16	.1870	.1885	.220	.260	1/4	1/2	1 3/4	1 1/4	3/4
1/4	.2470	.2485	.289	.290	1/4	1/2	1 3/4	1 1/4	3/4
5/16	.3095	.3110	.375	.330	1/4	1/2	1 3/4	1 1/4	3/4
3/8	.3720	.3735	.440	.365	5/16	19/32	2	1 7/16	15/16
7/16	.4345	.4360	.509	.380	5/16	19/32	2	1 7/16	15/16
1/2	.4970	.4985	.594	.460	15/32	3/4	2 1/4	1 5/8	1
9/16	.5595	.5610	.666	.510	15/32	3/4	2 1/4	1 5/8	1
5/8	.6220	.6235	.750	.580	9/16	15/16	2 1/2	1 31/32	1 3/16
3/4	.7470	.7485	.887	.670	5/8	15/16	2 1/2	1 31/32	1 3/16
7/8	.8720	.8735	1.046	.760	3/4	1 1/4	3 1/4	2 1/4	1 11/32
1	.9970	.9985	1.209	.890	3/4	1 1/4	3 1/4	2 1/4	1 11/32

- The L-handle pins provides a firm grip for applications where a T-handle will not fit.
- Handle is black cast aluminum and the button is brass.
- Pin body available in:
Stainless steel
Carbon steel
Alloy steel
- Includes hole and split ring for easy attachment of optional lanyard.

Because we have several different size moulds of handle, so the handle dimensions of above are just for reference. If you have special requirements about the handle dimensions, please notice to us in advance, thanks!

L形手柄 / L-Handle Specifications-公制(Metric)

插销 直径	ØA		+/-0.25 B	+0.0/ -1.0 C	D	E	F	G	H
	最小	最大							
5	4.92	4.96	5.54	6	6.5	13.1	44.9	31.3	19.7
6	5.92	5.96	6.99	7	6.5	13.1	44.9	31.3	19.7
8	7.92	7.96	9.42	8	6.5	13.1	44.9	31.3	19.7
10	9.92	9.96	11.86	9	7.7	15.1	50.8	36.1	24.0
12	11.92	11.96	14.45	10	11.1	19.1	57.2	41.9	25.8
16	15.92	15.96	19.00	14	14.5	23.9	63.0	49.8	30.1
20	19.92	19.96	24.08	17	26.2	23.9	63.0	49.8	30.1
25	24.92	24.96	30.94	22	26.2	32.4	82.6	55.9	33.9

尺寸单位为毫米

因工厂手柄模具有多套, 无法全部列出, 故以上手柄部位的尺寸仅供参考, 以实际装配的手柄尺寸为准。如对手柄尺寸有特殊要求, 请在采购前告知我们。

江阴市瑞特昂五金机电有限公司 / Riteon Corp., LTd.

L型手柄 / L-Handle Specifications-英制(Inch)

Diameter	Grip Length (Inch)												
	0.5	0.75	1	1.25	1.5	1.75	2	2.5	3	4	5	6	
不锈钢 Stainless Steel													
件号 PART NUMBERS	3/16	18SL05	18SL075	18SL10	18SL125	18SL15	18SL175	18SL20	18SL25	18SL30	18SL40	18SL50	18SL60
	1/4	25SL05	25SL075	25SL10	25SL125	25SL15	25SL175	25SL20	25SL25	25SL30	25SL40	25SL50	25SL60
	5/16	31SL05	31SL075	31SL10	31SL125	31SL15	31SL175	31SL20	31SL25	31SL30	31SL40	31SL50	31SL60
	3/8	37SL05	37SL075	37SL10	37SL125	37SL15	37SL175	37SL20	37SL25	37SL30	37SL40	37SL50	37SL60
	7/16	43SL05	43SL075	43SL10	43SL125	43SL15	43SL175	43SL20	43SL25	43SL30	43SL40	43SL50	43SL60
	1/2	50SL05	50SL075	50SL10	50SL125	50SL15	50SL175	50SL20	50SL25	50SL30	50SL40	50SL50	50SL60
	9/16	56SL05	56SL075	56SL10	56SL125	56SL15	56SL175	56SL20	56SL25	56SL30	56SL40	56SL50	56SL60
	5/8	62SL05	62SL075	62SL10	62SL125	62SL15	62SL175	62SL20	62SL25	62SL30	62SL40	62SL50	62SL60
	3/4	75SL05	75SL075	75SL10	75SL125	75SL15	75SL175	75SL20	75SL25	75SL30	75SL40	75SL50	75SL60
	7/8	87SL05	87SL075	87SL10	87SL125	87SL15	87SL175	87SL20	87SL25	87SL30	87SL40	87SL50	87SL60
	1	100SL05	100SL075	100SL10	100SL125	100SL15	100SL175	100SL20	100SL25	100SL30	100SL40	100SL50	100SL60
	合金钢 Alloy Steel												
	3/16	18AL05	18AL075	18AL10	18AL125	18AL15	18AL175	18AL20	18AL25	18AL30	18AL40	18AL50	18AL60
	1/4	25AL05	25AL075	25AL10	25AL125	25AL15	25AL175	25AL20	25AL25	25AL30	25AL40	25AL50	25AL60
	5/16	31AL05	31AL075	31AL10	31AL125	31AL15	31AL175	31AL20	31AL25	31AL30	31AL40	31AL50	31AL60
	3/8	37AL05	37AL075	37AL10	37AL125	37AL15	37AL175	37AL20	37AL25	37AL30	37AL40	37AL50	37AL60
7/16	43AL05	43AL075	43AL10	43AL125	43AL15	43AL175	43AL20	43AL25	43AL30	43AL40	43AL50	43AL60	
1/2	50AL05	50AL075	50AL10	50AL125	50AL15	50AL175	50AL20	50AL25	50AL30	50AL40	50AL50	50AL60	
9/16	56AL05	56AL075	56AL10	56AL125	56AL15	56AL175	56AL20	56AL25	56AL30	56AL40	56AL50	56AL60	
5/8	62AL05	62AL075	62AL10	62AL125	62AL15	62AL175	62AL20	62AL25	62AL30	62AL40	62AL50	62AL60	
3/4	75AL05	75AL075	75AL10	75AL125	75AL15	75AL175	75AL20	75AL25	75AL30	75AL40	75AL50	75AL60	
7/8	87AL05	87AL075	87AL10	87AL125	87AL15	87AL175	87AL20	87AL25	87AL30	87AL40	87AL50	87AL60	
1	100AL05	100AL075	100AL10	100AL125	100AL15	100AL175	100AL20	100AL25	100AL30	100AL40	100AL50	100AL60	

Contact customer service for other sizes. Includes attachment ring.

L型手柄 / L-Handle Specifications-公制(Metric)

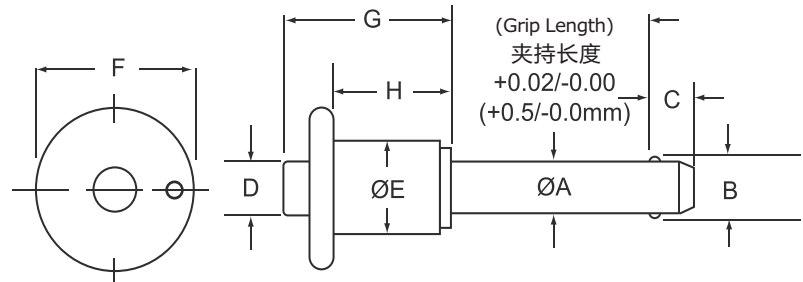
插销直径	夹持长度(毫米)												
	10	15	20	25	30	40	50	60	70	80	90	100	
不锈钢 Stainless Steel													
件号 PART NUMBERS	5	M5SL10	M5SL15	M5SL20	M5SL25	M5SL30	M5SL40	M5SL50	M5SL60	M5SL70	M5SL80	M5SL90	M5SL100
	6	M6SL10	M6SL15	M6SL20	M6SL25	M6SL30	M6SL40	M6SL50	M6SL60	M6SL70	M6SL80	M6SL90	M6SL100
	8	M8SL10	M8SL15	M8SL20	M8SL25	M8SL30	M8SL40	M8SL50	M8SL60	M8SL70	M8SL80	M8SL90	M8SL100
	10	M10SL10	M10SL15	M10SL20	M10SL25	M10SL30	M10SL40	M10SL50	M10SL60	M10SL70	M10SL80	M10SL90	M10SL100
	12	M12SL10	M12SL15	M12SL20	M12SL25	M12SL30	M12SL40	M12SL50	M12SL60	M12SL70	M12SL80	M12SL90	M12SL100
	16	M16SL10	M16SL15	M16SL20	M16SL25	M16SL30	M16SL40	M16SL50	M16SL60	M16SL70	M16SL80	M16SL90	M16SL100
	20	M20SL10	M20SL15	M20SL20	M20SL25	M20SL30	M20SL40	M20SL50	M20SL60	M20SL70	M20SL80	M20SL90	M20SL100
	25	M25SL10	M25SL15	M25SL20	M25SL25	M25SL30	M25SL40	M25SL50	M25SL60	M25SL70	M25SL80	M25SL90	M25SL100
碳钢 Carbon Steel													
5	M5AL10	M5AL15	M5AL20	M5AL25	M5AL30	M5AL40	M5AL50	M5AL60	M5AL70	M5AL80	M5AL90	M5AL100	
6	M6AL10	M6AL15	M6AL20	M6AL25	M6AL30	M6AL40	M6AL50	M6AL60	M6AL70	M6AL80	M6AL90	M6AL100	
8	M8AL10	M8AL15	M8AL20	M8AL25	M8AL30	M8AL40	M8AL50	M8AL60	M8AL70	M8AL80	M8AL90	M8AL100	
10	M10AL10	M10AL15	M10AL20	M10AL25	M10AL30	M10AL40	M10AL50	M10AL60	M10AL70	M10AL80	M10AL90	M10AL100	
12	M12AL10	M12AL15	M12AL20	M12AL25	M12AL30	M12AL40	M12AL50	M12AL60	M12AL70	M12AL80	M12AL90	M12AL100	
16	M16AL10	M16AL15	M16AL20	M16AL25	M16AL30	M16AL40	M16AL50	M16AL60	M16AL70	M16AL80	M16AL90	M16AL100	
20	M20AL10	M20AL15	M20AL20	M20AL25	M20AL30	M20AL40	M20AL50	M20AL60	M20AL70	M20AL80	M20AL90	M20AL100	
25	M25AL10	M25AL15	M25AL20	M25AL25	M25AL30	M25AL40	M25AL50	M25AL60	M25AL70	M25AL80	M25AL90	M25AL100	

需要其他公制尺寸请联系客户服务部门。产品包含开口环

江阴市瑞特昂五金机电有限公司 / Riteon Corp., LTd.

B型快卸销

Button Handle Quick release pins



B形手柄 / Button Handle Specifications-英制(Inch)

Diameter	ØA		+/-0.005 B	+0.00/ -0.04 C	D	E	F	G	H
	Min	Max							
3/16	.1870	.1885	.220	.260	1/4	1/2	13/16	7/8	5/8
1/4	.2470	.2485	.289	.290	1/4	1/2	13/16	7/8	5/8
5/16	.3095	.3110	.375	.330	1/4	1/2	13/16	29/32	5/8
3/8	.3720	.3735	.440	.365	5/16	9/16	1 1/8	1 3/16	13/16
7/16	.4345	.4360	.509	.380	5/16	9/16	1 1/8	1 3/16	13/16
1/2	.4970	.4985	.594	.460	7/16	3/4	1 3/8	1 13/32	1
9/16	.5595	.5610	.666	.510	7/16	3/4	1 3/8	1 1/2	1
5/8	.6220	.6235	.750	.580	37/64	15/16	1 3/4	1 5/8	1 1/16
3/4	.7470	.7485	.887	.670	37/64	15/16	1 3/4	1 19/32	1 1/16
7/8	.8720	.8735	1.046	.760	3/4	1 1/4	2 1/8	2 1/8	1 15/32
1	.9970	.9985	1.209	.890	3/4	1 1/4	2 1/8	2 1/8	1 15/32

Because we have several different size moulds of handle, so the handle dimensions of above are just for reference. If you have special requirements about the handle dimensions, please notice to us in advance, thanks!

- The Button handle pins is ideal for applications that have limited space around the handle.
- Handle is black cast aluminum and the button is brass.
- Pin body available in:
Stainless steel
Carbon steel
Alloy steel
- Includes hole and split ring for easy attachment of optional lanyard.

B形手柄 / Button Handle Specifications-公制(Metric)

插销 直径	ØA		+/-0.25 B	+0.0/ -1.0 C	D	E	F	G	H
	最小	最大							
5	4.92	4.96	5.54	6	6.5	11.8	20.3	22.1	16.3
6	5.92	5.96	6.99	7	6.5	11.8	20.3	22.1	16.3
8	7.92	7.96	9.42	8	6.5	11.8	20.3	22.9	16.3
10	9.92	9.96	11.86	9	7.7	14.2	28.5	30.0	20.7
12	11.92	11.96	14.45	10	11.2	19.0	34.8	35.9	25.8
16	15.92	15.96	19.00	14	14.5	23.8	44.3	41.5	27.0
20	19.92	19.96	24.08	17	14.5	23.8	44.3	41.5	27.0
25	24.92	24.96	30.94	22	19.2	31.8	53.9	54.4	37.2

尺寸单位为毫米

因工厂手柄模具有多套,无法全部列出,故以上手柄部位的尺寸仅供参考,以实际装配的手柄尺寸为准。如对手柄尺寸有特殊要求,请在采购前告知我们。

江阴市瑞特昂五金机电有限公司 / Riteon Corp., LTd.

B型手柄 / Button Handle Specifications-英制(Inch)

Diameter	Grip Length (Inch)												
	0.5	0.75	1	1.25	1.5	1.75	2	2.5	3	4	5	6	
件号 PART NUMBERS	不锈钢 Stainless Steel												
	3/16	18SB05	18SB075	18SB10	18SB125	18SB15	18SB175	18SB20	18SB25	18SB30	18SB40	18SB50	18SB60
	1/4	25SB05	25SB075	25SB10	25SB125	25SB15	25SB175	25SB20	25SB25	25SB30	25SB40	25SB50	25SB60
	5/16	31SB05	31SB075	31SB10	31SB125	31SB15	31SB175	31SB20	31SB25	31SB30	31SB40	31SB50	31SB60
	3/8	37SB05	37SB075	37SB10	37SB125	37SB15	37SB175	37SB20	37SB25	37SB30	37SB40	37SB50	37SB60
	7/16	43SB05	43SB075	43SB10	43SB125	43SB15	43SB175	43SB20	43SB25	43SB30	43SB40	43SB50	43SB60
	1/2	50SB05	50SB075	50SB10	50SB125	50SB15	50SB175	50SB20	50SB25	50SB30	50SB40	50SB50	50SB60
	9/16	56SB05	56SB075	56SB10	56SB125	56SB15	56SB175	56SB20	56SB25	56SB30	56SB40	56SB50	56SB60
	5/8	62SB05	62SB075	62SB10	62SB125	62SB15	62SB175	62SB20	62SB25	62SB30	62SB40	62SB50	62SB60
	3/4	75SB05	75SB075	75SB10	75SB125	75SB15	75SB175	75SB20	75SB25	75SB30	75SB40	75SB50	75SB60
	7/8	87SB05	87SB075	87SB10	87SB125	87SB15	87SB175	87SB20	87SB25	87SB30	87SB40	87SB50	87SB60
	1	100SB05	100SB075	100SB10	100SB125	100SB15	100SB175	100SB20	100SB25	100SB30	100SB40	100SB50	100SB60
	合金钢 Alloy Steel												
	3/16	18AB05	18AB075	18AB10	18AB125	18AB15	18AB175	18AB20	18AB25	18AB30	18AB40	18AB50	18AB60
	1/4	25AB05	25AB075	25AB10	25AB125	25AB15	25AB175	25AB20	25AB25	25AB30	25AB40	25AB50	25AB60
	5/16	31AB05	31AB075	31AB10	31AB125	31AB15	31AB175	31AB20	31AB25	31AB30	31AB40	31AB50	31AB60
	3/8	37AB05	37AB075	37AB10	37AB125	37AB15	37AB175	37AB20	37AB25	37AB30	37AB40	37AB50	37AB60
	7/16	43AB05	43AB075	43AB10	43AB125	43AB15	43AB175	43AB20	43AB25	43AB30	43AB40	43AB50	43AB60
	1/2	50AB05	50AB075	50AB10	50AB125	50AB15	50AB175	50AB20	50AB25	50AB30	50AB40	50AB50	50AB60
	9/16	56AB05	56AB075	56AB10	56AB125	56AB15	56AB175	56AB20	56AB25	56AB30	56AB40	56AB50	56AB60
5/8	62AB05	62AB075	62AB10	62AB125	62AB15	62AB175	62AB20	62AB25	62AB30	62AB40	62AB50	62AB60	
3/4	75AB05	75AB075	75AB10	75AB125	75AB15	75AB175	75AB20	75AB25	75AB30	75AB40	75AB50	75AB60	
7/8	87AB05	87AB075	87AB10	87AB125	87AB15	87AB175	87AB20	87AB25	87AB30	87AB40	87AB50	87AB60	
1	100AB05	100AB075	100AB10	100AB125	100AB15	100AB175	100AB20	100AB25	100AB30	100AB40	100AB50	100AB60	

Contact customer service for other sizes. Includes attachment ring.

B型手柄 / Button Handle Specifications-公制(Metric)

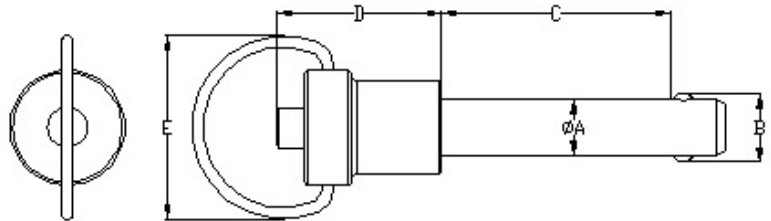
插销直径	夹持长度(毫米)												
	10	15	20	25	30	40	50	60	70	80	90	100	
件号 PART NUMBERS	不锈钢 Stainless Steel												
	5	M5SB10	M5SB15	M5SB20	M5SB25	M5SB30	M5SB40	M5SB50	M5SB60	M5SB70	M5SB80	M5SB90	M5SB100
	6	M6SB10	M6SB15	M6SB20	M6SB25	M6SB30	M6SB40	M6SB50	M6SB60	M6SB70	M6SB80	M6SB90	M6SB100
	8	M8SB10	M8SB15	M8SB20	M8SB25	M8SB30	M8SB40	M8SB50	M8SB60	M8SB70	M8SB80	M8SB90	M8SB100
	10	M10SB10	M10SB15	M10SB20	M10SB25	M10SB30	M10SB40	M10SB50	M10SB60	M10SB70	M10SB80	M10SB90	M10SB100
	12	M12SB10	M12SB15	M12SB20	M12SB25	M12SB30	M12SB40	M12SB50	M12SB60	M12SB70	M12SB80	M12SB90	M12SB100
	16	M16SB10	M16SB15	M16SB20	M16SB25	M16SB30	M16SB40	M16SB50	M16SB60	M16SB70	M16SB80	M16SB90	M16SB100
	20	M20SB10	M20SB15	M20SB20	M20SB25	M20SB30	M20SB40	M20SB50	M20SB60	M20SB70	M20SB80	M20SB90	M20SB100
	25	M25SB10	M25SB15	M25SB20	M25SB25	M25SB30	M25SB40	M25SB50	M25SB60	M25SB70	M25SB80	M25SB90	M25SB100
	合金钢 Alloy Steel												
	5	M5AB10	M5AB15	M5AB20	M5AB25	M5AB30	M5AB40	M5AB50	M5AB60	M5AB70	M5AB80	M5AB90	M5AB100
	6	M6AB10	M6AB15	M6AB20	M6AB25	M6AB30	M6AB40	M6AB50	M6AB60	M6AB70	M6AB80	M6AB90	M6AB100
	8	M8AB10	M8AB15	M8AB20	M8AB25	M8AB30	M8AB40	M8AB50	M8AB60	M8AB70	M8AB80	M8AB90	M8AB100
	10	M10AB10	M10AB15	M10AB20	M10AB25	M10AB30	M10AB40	M10AB50	M10AB60	M10AB70	M10AB80	M10AB90	M10AB100
	12	M12AB10	M12AB15	M12AB20	M12AB25	M12AB30	M12AB40	M12AB50	M12AB60	M12AB70	M12AB80	M12AB90	M12AB100
	16	M16AB10	M16AB15	M16AB20	M16AB25	M16AB30	M16AB40	M16AB50	M16AB60	M16AB70	M16AB80	M16AB90	M16AB100
	20	M20AB10	M20AB15	M20AB20	M20AB25	M20AB30	M20AB40	M20AB50	M20AB60	M20AB70	M20AB80	M20AB90	M20AB100
	25	M25AB10	M25AB15	M25AB20	M25AB25	M25AB30	M25AB40	M25AB50	M25AB60	M25AB70	M25AB80	M25AB90	M25AB100

需要其他公制尺寸请联系客户服务部门。产品包含开口环

江阴市瑞特昂五金机电有限公司 / Riteon Corp., LTd.

R型快卸销

Ring Handle Quick release pins



R形手柄 / Ring Handle Specifications-英制(Inch)

Diameter	ØA		+/-0.005 B	D	E
	Min	Max			
3/16	.1870	.1885	.220	.886	1.106
1/4	.2470	.2485	.289	.886	1.106
5/16	.3095	.3110	.375	.886	1.106
3/8	.3720	.3735	.440	1.149	1.279
7/16	.4346	.4360	.509	1.149	1.279
1/2	.4970	.4985	.594	1.149	1.279
9/16	.5595	.5610	.660	1.149	1.279
5/8	.6220	.6235	.750	1.149	1.279
3/4	.7470	.7485	.887	1.732	1.622
7/8	.8720	.8735	1.045	2.125	1.750
1	.9970	.9985	1.208	2.125	1.750

- Handle is SS304 and the button is SS304 or brass.
- Pin body available in:
Stainless steel
Alloy steel
- Includes hole and split ring for easy attachment of optional lanyard.

R形手柄 / Ring Handle Specifications-公制(Metric)

插销 直径	ØA		+/-0.25 B	D	E
	最小	最大			
5	4.92	4.96	5.54	22.00	28.10
6	5.92	5.96	6.99	22.00	28.10
8	7.92	7.96	9.42	22.00	28.10
10	9.92	9.96	11.86	29.20	32.50
12	11.92	11.96	14.45	29.20	32.50
16	15.92	15.96	19.00	32.00	32.50
20	19.92	19.96	24.08	44.00	41.20
25	24.92	24.96	30.90	53.50	44.50

尺寸单位为毫米

江阴市瑞特昂五金机电有限公司 / Riteon Corp., LTd.

R型手柄 / Ring Handle Specifications-英制(Inch)

Diameter	Grip Length (Inch)												
	0.5	0.75	1	1.25	1.5	1.75	2	2.5	3	4	5	6	
件号 PART NUMBERS	不锈钢 Stainless Steel												
	3/16	18SR05	18SR075	18SR10	18SR125	18SR15	18SR175	18SR20	18SR25	18SR30	18SR40	18SR50	18SR60
	1/4	25SR05	25SR075	25SR10	25SR125	25SR15	25SR175	25SR20	25SR25	25SR30	25SR40	25SR50	25SR60
	5/16	31SR05	31SR075	31SR10	31SR125	31SR15	31SR175	31SR20	31SR25	31SR30	31SR40	31SR50	31SR60
	3/8	37SR05	37SR075	37SR10	37SR125	37SR15	37SR175	37SR20	37SR25	37SR30	37SR40	37SR50	37SR60
	7/16	43SR05	43SR075	43SR10	43SR125	43SR15	43SR175	43SR20	43SR25	43SR30	43SR40	43SR50	43SR60
	1/2	50SR05	50SR075	50SR10	50SR125	50SR15	50SR175	50SR20	50SR25	50SR30	50SR40	50SR50	50SR60
	9/16	56SR05	56SR075	56SR10	56SR125	56SR15	56SR175	56SR20	56SR25	56SR30	56SR40	56SR50	56SR60
	5/8	62SR05	62SR075	62SR10	62SR125	62SR15	62SR175	62SR20	62SR25	62SR30	62SR40	62SR50	62SR60
	3/4	75SR05	75SR075	75SR10	75SR125	75SR15	75SR175	75SR20	75SR25	75SR30	75SR40	75SR50	75SR60
	7/8	87SR05	87SR075	87SR10	87SR125	87SR15	87SR175	87SR20	87SR25	87SR30	87SR40	87SR50	87SR60
	1	100SR05	100SR075	100SR10	100SR125	100SR15	100SR175	100SR20	100SR25	100SR30	100SR40	100SR50	100SR60
	合金钢 Alloy Steel												
	3/16	18AR05	18AR075	18AR10	18AR125	18AR15	18AR175	18AR20	18AR25	18AR30	18AR40	18AR50	18AR60
	1/4	25AR05	25AR075	25AR10	25AR125	25AR15	25AR175	25AR20	25AR25	25AR30	25AR40	25AR50	25AR60
	5/16	31AR05	31AR075	31AR10	31AR125	31AR15	31AR175	31AR20	31AR25	31AR30	31AR40	31AR50	31AR60
	3/8	37AR05	37AR075	37AR10	37AR125	37AR15	37AR175	37AR20	37AR25	37AR30	37AR40	37AR50	37AR60
	7/16	43AR05	43AR075	43AR10	43AR125	43AR15	43AR175	43AR20	43AR25	43AR30	43AR40	43AR50	43AR60
	1/2	50AR05	50AR075	50AR10	50AR125	50AR15	50AR175	50AR20	50AR25	50AR30	50AR40	50AR50	50AR60
	9/16	56AR05	56AR075	56AR10	56AR125	56AR15	56AR175	56AR20	56AR25	56AR30	56AR40	56AR50	56AR60
5/8	62AR05	62AR075	62AR10	62AR125	62AR15	62AR175	62AR20	62AR25	62AR30	62AR40	62AR50	62AR60	
3/4	75AR05	75AR075	75AR10	75AR125	75AR15	75AR175	75AR20	75AR25	75AR30	75AR40	75AR50	75AR60	
7/8	87AR05	87AR075	87AR10	87AR125	87AR15	87AR175	87AR20	87AR25	87AR30	87AR40	87AR50	87AR60	
1	100AR05	100AR075	100AR10	100AR125	100AR15	100AR175	100AR20	100AR25	100AR30	100AR40	100AR50	100AR60	

Contact customer service for other sizes. Includes attachment ring.

R型手柄 / Ring Handle Specifications-公制(Metric)

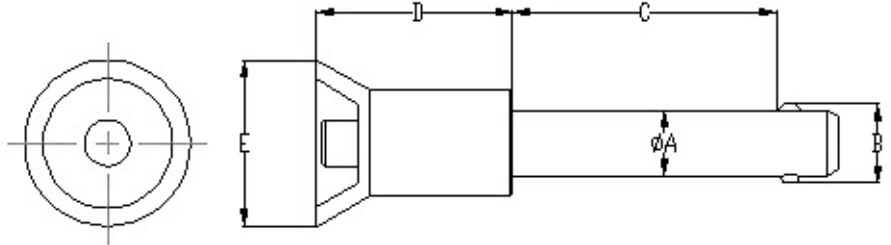
插销直径	夹持长度(毫米)												
	10	15	20	25	30	40	50	60	70	80	90	100	
件号 PART NUMBERS	不锈钢 Stainless Steel												
	5	M5SR10	M5SR15	M5SR20	M5SR25	M5SR30	M5SR40	M5SR50	M5SR60	M5SR70	M5SR80	M5SR90	M5SR100
	6	M6SR10	M6SR15	M6SR20	M6SR25	M6SR30	M6SR40	M6SR50	M6SR60	M6SR70	M6SR80	M6SR90	M6SR100
	8	M8SR10	M8SR15	M8SR20	M8SR25	M8SR30	M8SR40	M8SR50	M8SR60	M8SR70	M8SR80	M8SR90	M8SR100
	10	M10SR10	M10SR15	M10SR20	M10SR25	M10SR30	M10SR40	M10SR50	M10SR60	M10SR70	M10SR80	M10SR90	M10SR100
	12	M12SR10	M12SR15	M12SR20	M12SR25	M12SR30	M12SR40	M12SR50	M12SR60	M12SR70	M12SR80	M12SR90	M12SR100
	16	M16SR10	M16SR15	M16SR20	M16SR25	M16SR30	M16SR40	M16SR50	M16SR60	M16SR70	M16SR80	M16SR90	M16SR100
	20	M20SR10	M20SR15	M20SR20	M20SR25	M20SR30	M20SR40	M20SR50	M20SR60	M20SR70	M20SR80	M20SR90	M20SR100
	25	M25SR10	M25SR15	M25SR20	M25SR25	M25SR30	M25SR40	M25SR50	M25SR60	M25SR70	M25SR80	M25SR90	M25SR100
	合金钢 Alloy Steel												
	5	M5AR10	M5AR15	M5AR20	M5AR25	M5AR30	M5AR40	M5AR50	M5AR60	M5AR70	M5AR80	M5AR90	M5AR100
	6	M6AR10	M6AR15	M6AR20	M6AR25	M6AR30	M6AR40	M6AR50	M6AR60	M6AR70	M6AR80	M6AR90	M6AR100
	8	M8AR10	M8AR15	M8AR20	M8AR25	M8AR30	M8AR40	M8AR50	M8AR60	M8AR70	M8AR80	M8AR90	M8AR100
	10	M10AR10	M10AR15	M10AR20	M10AR25	M10AR30	M10AR40	M10AR50	M10AR60	M10AR70	M10AR80	M10AR90	M10AR100
	12	M12AR10	M12AR15	M12AR20	M12AR25	M12AR30	M12AR40	M12AR50	M12AR60	M12AR70	M12AR80	M12AR90	M12AR100
	16	M16AR10	M16AR15	M16AR20	M16AR25	M16AR30	M16AR40	M16AR50	M16AR60	M16AR70	M16AR80	M16AR90	M16AR100
	20	M20AR10	M20AR15	M20AR20	M20AR25	M20AR30	M20AR40	M20AR50	M20AR60	M20AR70	M20AR80	M20AR90	M20AR100
	25	M25AR10	M25AR15	M25AR20	M25AR25	M25AR30	M25AR40	M25AR50	M25AR60	M25AR70	M25AR80	M25AR90	M25AR100

需要其他公制尺寸请联系客户服务部门。产品包含开口环

江阴市瑞特昂五金机电有限公司 / Riteon Corp., LTD.

沉头式M型快卸销

Marine Handle Quick release pins



- Handle is SS304 and the button is SS304 or brass.
- Pin body available in:
Stainless steel
Alloy steel
- Includes hole and split ring for easy attachment of optional lanyard.

M形手柄 / Marine Handle Specifications-英制(Inch)

Diameter	ØA		+/-0.005 B	D	E
	Min	Max			
3/16	.1870	.1885	.220	1.000	0.810
1/4	.2470	.2485	.289	1.000	0.810
5/16	.3095	.3110	.375	1.000	0.810
3/8	.3720	.3735	.440	1.310	1.100
7/16	.4346	.4360	.509	1.310	1.100
1/2	.4970	.4985	.594	1.200	1.080
9/16	.5595	.5610	.660		
5/8	.6220	.6235	.750		
3/4	.7470	.7485	.887		
7/8	.8720	.8735	1.045		
1	.9970	.9985	1.208		

M形手柄 / Marine Handle Specifications-公制(Metric)

插销 直径	ØA		+/-0.25 B	D	E
	最小	最大			
5	4.92	4.96	5.54	25.40	20.60
6	5.92	5.96	6.99	25.40	20.60
8	7.92	7.96	9.42	25.40	20.60
10	9.92	9.96	11.86	33.20	27.70
12	11.92	11.96	14.45	30.60	27.50
16	15.92	15.96	19.00		
20	19.92	19.96	24.08		
25	24.92	24.96	30.90		

尺寸单位为毫米

江阴市瑞特昂五金机电有限公司 / Riteon Corp., LTd.

M型手柄 / Marine Handle Specifications-英制(Inch)

Diameter	Grip Length (Inch)												
	0.5	0.75	1	1.25	1.5	1.75	2	2.5	3	4	5	6	
件号 PART NUMBERS	不锈钢 Stainless Steel												
	3/16	18SM05	18SM075	18SM10	18SM125	18SM15	18SM175	18SM20	18SM25	18SM30	18SM40	18SM50	18SM60
	1/4	25SM05	25SM075	25SM10	25SM125	25SM15	25SM175	25SM20	25SM25	25SM30	25SM40	25SM50	25SM60
	5/16	31SM05	31SM075	31SM10	31SM125	31SM15	31SM175	31SM20	31SM25	31SM30	31SM40	31SM50	31SM60
	3/8	37SM05	37SM075	37SM10	37SM125	37SM15	37SM175	37SM20	37SM25	37SM30	37SM40	37SM50	37SM60
	7/16	43SM05	43SM075	43SM10	43SM125	43SM15	43SM175	43SM20	43SM25	43SM30	43SM40	43SM50	43SM60
	1/2	50SM05	50SM075	50SM10	50SM125	50SM15	50SM175	50SM20	50SM25	50SM30	50SM40	50SM50	50SM60
	9/16	56SM05	56SM075	56SM10	56SM125	56SM15	56SM175	56SM20	56SM25	56SM30	56SM40	56SM50	56SM60
	5/8	62SM05	62SM075	62SM10	62SM125	62SM15	62SM175	62SM20	62SM25	62SM30	62SM40	62SM50	62SM60
	3/4	75SM05	75SM075	75SM10	75SM125	75SM15	75SM175	75SM20	75SM25	75SM30	75SM40	75SM50	75SM60
	7/8	87SM05	87SM075	87SM10	87SM125	87SM15	87SM175	87SM20	87SM25	87SM30	87SM40	87SM50	87SM60
	1	100SM05	100SM075	100SM10	100SM125	100SM15	100SM175	100SM20	100SM25	100SM30	100SM40	100SM50	100SM60
	合金钢 Alloy Steel												
	3/16	18AM05	18AM075	18AM10	18AM125	18AM15	18AM175	18AM20	18AM25	18AM30	18AM40	18AM50	18AM60
	1/4	25AM05	25AM075	25AM10	25AM125	25AM15	25AM175	25AM20	25AM25	25AM30	25AM40	25AM50	25AM60
	5/16	31AM05	31AM075	31AM10	31AM125	31AM15	31AM175	31AM20	31AM25	31AM30	31AM40	31AM50	31AM60
	3/8	37AM05	37AM075	37AM10	37AM125	37AM15	37AM175	37AM20	37AM25	37AM30	37AM40	37AM50	37AM60
	7/16	43AM05	43AM075	43AM10	43AM125	43AM15	43AM175	43AM20	43AM25	43AM30	43AM40	43AM50	43AM60
	1/2	50AM05	50AM075	50AM10	50AM125	50AM15	50AM175	50AM20	50AM25	50AM30	50AM40	50AM50	50AM60
	9/16	56AM05	56AM075	56AM10	56AM125	56AM15	56AM175	56AM20	56AM25	56AM30	56AM40	56AM50	56AM60
5/8	62AM05	62AM075	62AM10	62AM125	62AM15	62AM175	62AM20	62AM25	62AM30	62AM40	62AM50	62AM60	
3/4	75AM05	75AM075	75AM10	75AM125	75AM15	75AM175	75AM20	75AM25	75AM30	75AM40	75AM50	75AM60	
7/8	87AM05	87AM075	87AM10	87AM125	87AM15	87AM175	87AM20	87AM25	87AM30	87AM40	87AM50	87AM60	
1	100AM05	100AM075	100AM10	100AM125	100AM15	100AM175	100AM20	100AM25	100AM30	100AM40	100AM50	100AM60	

Contact customer service for other sizes. Includes attachment ring.

M型手柄 / Marine Handle Specifications-公制(Metric)

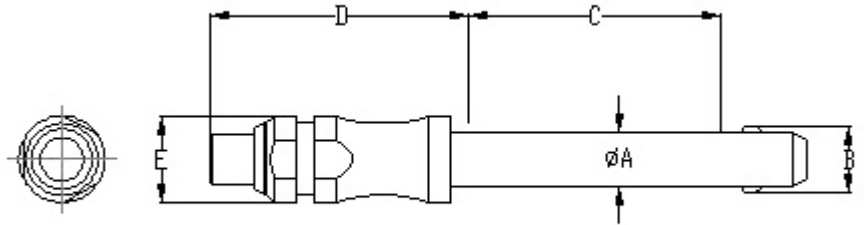
插销直径	夹持长度(毫米)												
	10	15	20	25	30	40	50	60	70	80	90	100	
件号 PART NUMBERS	不锈钢 Stainless Steel												
	5	M5SM10	M5SM15	M5SM20	M5SM25	M5SM30	M5SM40	M5SM50	M5SM60	M5SM70	M5SM80	M5SM90	M5SM100
	6	M6SM10	M6SM15	M6SM20	M6SM25	M6SM30	M6SM40	M6SM50	M6SM60	M6SM70	M6SM80	M6SM90	M6SM100
	8	M8SM10	M8SM15	M8SM20	M8SM25	M8SM30	M8SM40	M8SM50	M8SM60	M8SM70	M8SM80	M8SM90	M8SM100
	10	M10SM10	M10SM15	M10SM20	M10SM25	M10SM30	M10SM40	M10SM50	M10SM60	M10SM70	M10SM80	M10SM90	M10SM100
	12	M12SM10	M12SM15	M12SM20	M12SM25	M12SM30	M12SM40	M12SM50	M12SM60	M12SM70	M12SM80	M12SM90	M12SM100
	16	M16SM10	M16SM15	M16SM20	M16SM25	M16SM30	M16SM40	M16SM50	M16SM60	M16SM70	M16SM80	M16SM90	M16SM100
	20	M20SM10	M20SM15	M20SM20	M20SM25	M20SM30	M20SM40	M20SM50	M20SM60	M20SM70	M20SM80	M20SM90	M20SM100
	25	M25SM10	M25SM15	M25SM20	M25SM25	M25SM30	M25SM40	M25SM50	M25SM60	M25SM70	M25SM80	M25SM90	M25SM100
	合金钢 Alloy Steel												
	5	M5AM10	M5AM15	M5AM20	M5AM25	M5AM30	M5AM40	M5AM50	M5AM60	M5AM70	M5AM80	M5AM90	M5AM100
	6	M6AM10	M6AM15	M6AM20	M6AM25	M6AM30	M6AM40	M6AM50	M6AM60	M6AM70	M6AM80	M6AM90	M6AM100
	8	M8AM10	M8AM15	M8AM20	M8AM25	M8AM30	M8AM40	M8AM50	M8AM60	M8AM70	M8AM80	M8AM90	M8AM100
	10	M10AM10	M10AM15	M10AM20	M10AM25	M10AM30	M10AM40	M10AM50	M10AM60	M10AM70	M10AM80	M10AM90	M10AM100
	12	M12AM10	M12AM15	M12AM20	M12AM25	M12AM30	M12AM40	M12AM50	M12AM60	M12AM70	M12AM80	M12AM90	M12AM100
	16	M16AM10	M16AM15	M16AM20	M16AM25	M16AM30	M16AM40	M16AM50	M16AM60	M16AM70	M16AM80	M16AM90	M16AM100
	20	M20AM10	M20AM15	M20AM20	M20AM25	M20AM30	M20AM40	M20AM50	M20AM60	M20AM70	M20AM80	M20AM90	M20AM100
	25	M25AM10	M25AM15	M25AM20	M25AM25	M25AM30	M25AM40	M25AM50	M25AM60	M25AM70	M25AM80	M25AM90	M25AM100

需要其他公制尺寸请联系客户服务部门。产品包含开口环

江阴市瑞特昂五金机电有限公司 / Riteon Corp., LTd.

I 型快卸销

I Handle Quick release pins



I型手柄 / I Handle Specifications-英制(Inch)

Diameter	ØA		+/-0.005 B	D	E
	Min	Max			
3/16	.1870	.1885	.220	1.031	0.393
1/4	.2470	.2485	.289	1.031	0.393
5/16	.3095	.3110	.375	1.303	0.551
3/8	.3720	.3735	.440	1.303	0.551
7/16	.4346	.4360	.509	1.555	0.787
1/2	.4970	.4985	.594	1.555	0.787
9/16	.5595	.5610	.660	1.555	0.787
5/8	.6220	.6235	.750	1.555	0.787
3/4	.7470	.7485	.887	1.972	1.102
7/8	.8720	.8735	1.045	1.972	1.102
1	.9970	.9985	1.208	2.330	1.440

- Handle is SS304 and the button is SS304.
- Pin body available in:
Stainless steel
Alloy steel
- Includes hole and split ring for easy attachment of optional lanyard.

I型手柄 / I Handle Specifications-公制(Metric)

插销 直径	ØA		+/-0.25 B	D	E
	最小	最大			
5	4.92	4.96	5.54	26.20	10.00
6	5.92	5.96	6.99	26.20	10.00
8	7.92	7.96	9.42	33.10	14.00
10	9.92	9.96	11.86	33.10	14.00
12	11.92	11.96	14.45	39.50	20.00
16	15.92	15.96	19.00	39.50	20.00
20	19.92	19.96	24.08	50.10	28.00
25	24.92	24.96	30.90	59.20	36.60

尺寸单位为毫米

江阴市瑞特昂五金机电有限公司 / Riteon Corp., LTd.

I型手柄 / I Handle Specifications-英制(Inch)

Diameter	Grip Length (Inch)												
	0.5	0.75	1	1.25	1.5	1.75	2	2.5	3	4	5	6	
件号 PART NUMBERS	不锈钢 Stainless Steel												
	3/16	18SI05	18SI075	18SI10	18SI125	18SI15	18SI175	18SI20	18SI25	18SI30	18SI40	18SI50	18SI60
	1/4	25SI05	25SI075	25SI10	25SI125	25SI15	25SI175	25SI20	25SI25	25SI30	25SI40	25SI50	25SI60
	5/16	31SI05	31SI075	31SI10	31SI125	31SI15	31SI175	31SI20	31SI25	31SI30	31SI40	31SI50	31SI60
	3/8	37SI05	37SI075	37SI10	37SI125	37SI15	37SI175	37SI20	37SI25	37SI30	37SI40	37SI50	37SI60
	7/16	43SI05	43SI075	43SI10	43SI125	43SI15	43SI175	43SI20	43SI25	43SI30	43SI40	43SI50	43SI60
	1/2	50SI05	50SI075	50SI10	50SI125	50SI15	50SI175	50SI20	50SI25	50SI30	50SI40	50SI50	50SI60
	9/16	56SI05	56SI075	56SI10	56SI125	56SI15	56SI175	56SI20	56SI25	56SI30	56SI40	56SI50	56SI60
	5/8	62SI05	62SI075	62SI10	62SI125	62SI15	62SI175	62SI20	62SI25	62SI30	62SI40	62SI50	62SI60
	3/4	75SI05	75SI075	75SI10	75SI125	75SI15	75SI175	75SI20	75SI25	75SI30	75SI40	75SI50	75SI60
	7/8	87SI05	87SI075	87SI10	87SI125	87SI15	87SI175	87SI20	87SI25	87SI30	87SI40	87SI50	87SI60
	1	100SI05	100SI075	100SI10	100SI125	100SI15	100SI175	100SI20	100SI25	100SI30	100SI40	100SI50	100SI60
	合金钢 Alloy Steel												
	3/16	18AI05	18AI075	18AI10	18AI125	18AI15	18AI175	18AI20	18AI25	18AI30	18AI40	18AI50	18AI60
	1/4	25AI05	25AI075	25AI10	25AI125	25AI15	25AI175	25AI20	25AI25	25AI30	25AI40	25AI50	25AI60
	5/16	31AI05	31AI075	31AI10	31AI125	31AI15	31AI175	31AI20	31AI25	31AI30	31AI40	31AI50	31AI60
	3/8	37AI05	37AI075	37AI10	37AI125	37AI15	37AI175	37AI20	37AI25	37AI30	37AI40	37AI50	37AI60
	7/16	43AI05	43AI075	43AI10	43AI125	43AI15	43AI175	43AI20	43AI25	43AI30	43AI40	43AI50	43AI60
	1/2	50AI05	50AI075	50AI10	50AI125	50AI15	50AI175	50AI20	50AI25	50AI30	50AI40	50AI50	50AI60
9/16	56AI05	56AI075	56AI10	56AI125	56AI15	56AI175	56AI20	56AI25	56AI30	56AI40	56AI50	56AI60	
5/8	62AI05	62AI075	62AI10	62AI125	62AI15	62AI175	62AI20	62AI25	62AI30	62AI40	62AI50	62AI60	
3/4	75AI05	75AI075	75AI10	75AI125	75AI15	75AI175	75AI20	75AI25	75AI30	75AI40	75AI50	75AI60	
7/8	87AI05	87AI075	87AI10	87AI125	87AI15	87AI175	87AI20	87AI25	87AI30	87AI40	87AI50	87AI60	
1	100AI05	100AI075	100AI10	100AI125	100AI15	100AI175	100AI20	100AI25	100AI30	100AI40	100AI50	100AI60	

Contact customer service for other sizes. Includes attachment ring.

I型手柄 / I Handle Specifications-公制(Metric)

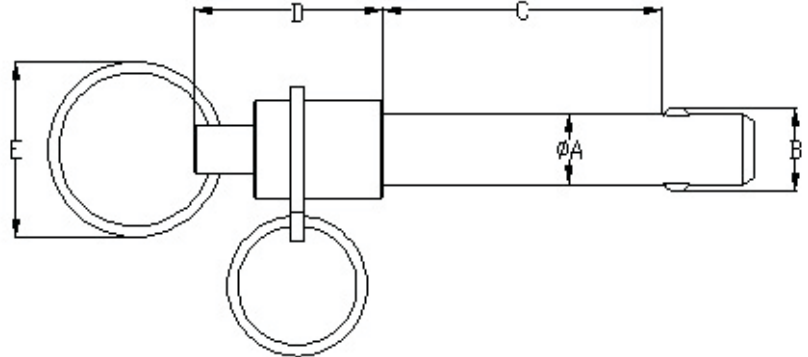
插销直径	夹持长度(毫米)												
	10	15	20	25	30	40	50	60	70	80	90	100	
件号 PART NUMBERS	不锈钢 Stainless Steel												
	5	M5SI10	M5SI15	M5SI20	M5SI25	M5SI30	M5SI40	M5SI50	M5SI60	M5SI70	M5SI80	M5SI90	M5SI100
	6	M6SI10	M6SI15	M6SI20	M6SI25	M6SI30	M6SI40	M6SI50	M6SI60	M6SI70	M6SI80	M6SI90	M6SI100
	8	M8SI10	M8SI15	M8SI20	M8SI25	M8SI30	M8SI40	M8SI50	M8SI60	M8SI70	M8SI80	M8SI90	M8SI100
	10	M10SI10	M10SI15	M10SI20	M10SI25	M10SI30	M10SI40	M10SI50	M10SI60	M10SI70	M10SI80	M10SI90	M10SI100
	12	M12SI10	M12SI15	M12SI20	M12SI25	M12SI30	M12SI40	M12SI50	M12SI60	M12SI70	M12SI80	M12SI90	M12SI100
	16	M16SI10	M16SI15	M16SI20	M16SI25	M16SI30	M16SI40	M16SI50	M16SI60	M16SI70	M16SI80	M16SI90	M16SI100
	20	M20SI10	M20SI15	M20SI20	M20SI25	M20SI30	M20SI40	M20SI50	M20SI60	M20SI70	M20SI80	M20SI90	M20SI100
	25	M25SI10	M25SI15	M25SI20	M25SI25	M25SI30	M25SI40	M25SI50	M25SI60	M25SI70	M25SI80	M25SI90	M25SI100
	合金钢 Alloy Steel												
	5	M5AI10	M5AI15	M5AI20	M5AI25	M5AI30	M5AI40	M5AI50	M5AI60	M5AI70	M5AI80	M5AI90	M5AI100
	6	M6AI10	M6AI15	M6AI20	M6AI25	M6AI30	M6AI40	M6AI50	M6AI60	M6AI70	M6AI80	M6AI90	M6AI100
	8	M8AI10	M8AI15	M8AI20	M8AI25	M8AI30	M8AI40	M8AI50	M8AI60	M8AI70	M8AI80	M8AI90	M8AI100
	10	M10AI10	M10AI15	M10AI20	M10AI25	M10AI30	M10AI40	M10AI50	M10AI60	M10AI70	M10AI80	M10AI90	M10AI100
	12	M12AI10	M12AI15	M12AI20	M12AI25	M12AI30	M12AI40	M12AI50	M12AI60	M12AI70	M12AI80	M12AI90	M12AI100
	16	M16AI10	M16AI15	M16AI20	M16AI25	M16AI30	M16AI40	M16AI50	M16AI60	M16AI70	M16AI80	M16AI90	M16AI100
	20	M20AI10	M20AI15	M20AI20	M20AI25	M20AI30	M20AI40	M20AI50	M20AI60	M20AI70	M20AI80	M20AI90	M20AI100
	25	M25AI10	M25AI15	M25AI20	M25AI25	M25AI30	M25AI40	M25AI50	M25AI60	M25AI70	M25AI80	M25AI90	M25AI100

需要其他公制尺寸请联系客户服务部门。产品包含开口环

江阴市瑞特昂五金机电有限公司 / Riteon Corp., LTd.

双制动型快卸销

Double acting Quick release pins



双制动型手柄 / Double Acting Handle Specifications-英制(Inch)

Diameter	ØA		+/-0.005 B	D	E
	Min	Max			
3/16	.1870	.1885	.220	1.030	1.000
1/4	.2470	.2485	.289	1.030	1.000
5/16	.3095	.3110	.375	1.030	1.000
3/8	.3720	.3735	.440	1.090	1.000
7/16	.4346	.4360	.509	1.090	1.000
1/2	.4970	.4985	.594	1.270	1.000
9/16	.5595	.5610	.660	1.270	1.000
5/8	.6220	.6235	.750	1.465	1.378
3/4	.7470	.7485	.887	1.465	1.378
7/8	.8720	.8735	1.045	1.640	1.378
1	.9970	.9985	1.208	1.830	1.378

- Double acting.
- Handle is SS304.
- Pin body available in:
Stainless steel
Alloy steel
- Includes hole and split ring for
easy attachment of optional
lanyard.

双制动型手柄 / Double Acting Handle Specifications-公制(Metric)

插销 直径	ØA		+/-0.25 B	D	E
	最小	最大			
5	4.92	4.96	5.54	26.10	25.00
6	5.92	5.96	6.99	26.10	25.00
8	7.92	7.96	9.42	26.10	25.00
10	9.92	9.96	11.86	27.69	25.00
12	11.92	11.96	14.45	27.69	25.00
16	15.92	15.96	19.00	37.20	25.00
20	19.92	19.96	24.08	37.20	35.00
25	24.92	24.96	30.90	46.48	35.00

尺寸单位为毫米

江阴市瑞特昂五金机电有限公司 / Riteon Corp., LTd.



双制动 / Double acting Specifications-英制(Inch)

Diameter	Grip Length (Inch)												
	0.5	0.75	1	1.25	1.5	1.75	2	2.5	3	4	5	6	
件号 PART NUMBERS	不锈钢 Stainless Steel												
	3/16	18SRD05	18SRD075	18SRD10	18SRD125	18SRD15	18SRD175	18SRD20	18SRD25	18SRD30	18SRD40	18SRD50	18SRD60
	1/4	25SRD05	25SRD075	25SRD10	25SRD125	25SRD15	25SRD175	25SRD20	25SRD25	25SRD30	25SRD40	25SRD50	25SRD60
	5/16	31SRD05	31SRD075	31SRD10	31SRD125	31SRD15	31SRD175	31SRD20	31SRD25	31SRD30	31SRD40	31SRD50	31SRD60
	3/8	37SRD05	37SRD075	37SRD10	37SRD125	37SRD15	37SRD175	37SRD20	37SRD25	37SRD30	37SRD40	37SRD50	37SRD60
	7/16	43SRD05	43SRD075	43SRD10	43SRD125	43SRD15	43SRD175	43SRD20	43SRD25	43SRD30	43SRD40	43SRD50	43SRD60
	1/2	50SRD05	50SRD075	50SRD10	50SRD125	50SRD15	50SRD175	50SRD20	50SRD25	50SRD30	50SRD40	50SRD50	50SRD60
	9/16	56SRD05	56SRD075	56SRD10	56SRD125	56SRD15	56SRD175	56SRD20	56SRD25	56SRD30	56SRD40	56SRD50	56SRD60
	5/8	62SRD05	62SRD075	62SRD10	62SRD125	62SRD15	62SRD175	62SRD20	62SRD25	62SRD30	62SRD40	62SRD50	62SRD60
	3/4	75SRD05	75SRD075	75SRD10	75SRD125	75SRD15	75SRD175	75SRD20	75SRD25	75SRD30	75SRD40	75SRD50	75SRD60
	7/8	87SRD05	87SRD075	87SRD10	87SRD125	87SRD15	87SRD175	87SRD20	87SRD25	87SRD30	87SRD40	87SRD50	87SRD60
	1	100SRD05	100SRD075	100SRD10	100SRD125	100SRD15	100SRD175	100SRD20	100SRD25	100SRD30	100SRD40	100SRD50	100SRD60
	合金钢 Alloy Steel												
	3/16	18ARD05	18ARD075	18ARD10	18ARD125	18ARD15	18ARD175	18ARD20	18ARD25	18ARD30	18ARD40	18ARD50	18ARD60
	1/4	25ARD05	25ARD075	25ARD10	25ARD125	25ARD15	25ARD175	25ARD20	25ARD25	25ARD30	25ARD40	25ARD50	25ARD60
5/16	31ARD05	31ARD075	31ARD10	31ARD125	31ARD15	31ARD175	31ARD20	31ARD25	31ARD30	31ARD40	31ARD50	31ARD60	
3/8	37ARD05	37ARD075	37ARD10	37ARD125	37ARD15	37ARD175	37ARD20	37ARD25	37ARD30	37ARD40	37ARD50	37ARD60	
7/16	43ARD05	43ARD075	43ARD10	43ARD125	43ARD15	43ARD175	43ARD20	43ARD25	43ARD30	43ARD40	43ARD50	43ARD60	
1/2	50ARD05	50ARD075	50ARD10	50ARD125	50ARD15	50ARD175	50ARD20	50ARD25	50ARD30	50ARD40	50ARD50	50ARD60	
9/16	56ARD05	56ARD075	56ARD10	56ARD125	56ARD15	56ARD175	56ARD20	56ARD25	56ARD30	56ARD40	56ARD50	56ARD60	
5/8	62ARD05	62ARD075	62ARD10	62ARD125	62ARD15	62ARD175	62ARD20	62ARD25	62ARD30	62ARD40	62ARD50	62ARD60	
3/4	75ARD05	75ARD075	75ARD10	75ARD125	75ARD15	75ARD175	75ARD20	75ARD25	75ARD30	75ARD40	75ARD50	75ARD60	
7/8	87ARD05	87ARD075	87ARD10	87ARD125	87ARD15	87ARD175	87ARD20	87ARD25	87ARD30	87ARD40	87ARD50	87ARD60	
1	100ARD05	100ARD075	100ARD10	100ARD125	100ARD15	100ARD175	100ARD20	100ARD25	100ARD30	100ARD40	100ARD50	100ARD60	

Contact customer service for other sizes. Includes attachment ring.

双制动 / Double acting Specifications-公制(Metric)

插销直径	夹持长度(毫米)												
	10	15	20	25	30	40	50	60	70	80	90	100	
件号 PART NUMBERS	不锈钢 Stainless Steel												
	5	M5SRD10	M5SRD15	M5SRD20	M5SRD25	M5SRD30	M5SRD40	M5SRD50	M5SRD60	M5SRD70	M5SRD80	M5SRD90	M5SRD100
	6	M6SRD10	M6SRD15	M6SRD20	M6SRD25	M6SRD30	M6SRD40	M6SRD50	M6SRD60	M6SRD70	M6SRD80	M6SRD90	M6SRD100
	8	M8SRD10	M8SRD15	M8SRD20	M8SRD25	M8SRD30	M8SRD40	M8SRD50	M8SRD60	M8SRD70	M8SRD80	M8SRD90	M8SRD100
	10	M10SRD10	M10SRD15	M10SRD20	M10SRD25	M10SRD30	M10SRD40	M10SRD50	M10SRD60	M10SRD70	M10SRD80	M10SRD90	M10SRD100
	12	M12SRD10	M12SRD15	M12SRD20	M12SRD25	M12SRD30	M12SRD40	M12SRD50	M12SRD60	M12SRD70	M12SRD80	M12SRD90	M12SRD100
	16	M16SRD10	M16SRD15	M16SRD20	M16SRD25	M16SRD30	M16SRD40	M16SRD50	M16SRD60	M16SRD70	M16SRD80	M16SRD90	M16SRD100
	20	M20SRD10	M20SRD15	M20SRD20	M20SRD25	M20SRD30	M20SRD40	M20SRD50	M20SRD60	M20SRD70	M20SRD80	M20SRD90	M20SRD100
	25	M25SRD10	M25SRD15	M25SRD20	M25SRD25	M25SRD30	M25SRD40	M25SRD50	M25SRD60	M25SRD70	M25SRD80	M25SRD90	M25SRD100
	合金钢 Alloy Steel												
	5	M5ARD10	M5ARD15	M5ARD20	M5ARD25	M5ARD30	M5ARD40	M5ARD50	M5ARD60	M5ARD70	M5ARD80	M5ARD90	M5ARD100
	6	M6ARD10	M6ARD15	M6ARD20	M6ARD25	M6ARD30	M6ARD40	M6ARD50	M6ARD60	M6ARD70	M6ARD80	M6ARD90	M6ARD100
	8	M8ARD10	M8ARD15	M8ARD20	M8ARD25	M8ARD30	M8ARD40	M8ARD50	M8ARD60	M8ARD70	M8ARD80	M8ARD90	M8ARD100
	10	M10ARD10	M10ARD15	M10ARD20	M10ARD25	M10ARD30	M10ARD40	M10ARD50	M10ARD60	M10ARD70	M10ARD80	M10ARD90	M10ARD100
	12	M12ARD10	M12ARD15	M12ARD20	M12ARD25	M12ARD30	M12ARD40	M12ARD50	M12ARD60	M12ARD70	M12ARD80	M12ARD90	M12ARD100
16	M16ARD10	M16ARD15	M16ARD20	M16ARD25	M16ARD30	M16ARD40	M16ARD50	M16ARD60	M16ARD70	M16ARD80	M16ARD90	M16ARD100	
20	M20ARD10	M20ARD15	M20ARD20	M20ARD25	M20ARD30	M20ARD40	M20ARD50	M20ARD60	M20ARD70	M20ARD80	M20ARD90	M20ARD100	
25	M25ARD10	M25ARD15	M25ARD20	M25ARD25	M25ARD30	M25ARD40	M25ARD50	M25ARD60	M25ARD70	M25ARD80	M25ARD90	M25ARD100	

需要其他公制尺寸请联系客户服务部门。产品包含开口环

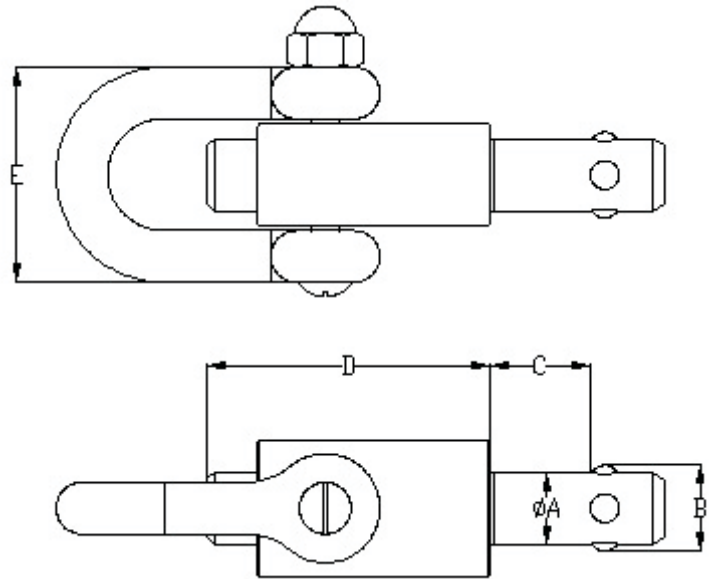
江阴市瑞特昂五金机电有限公司 / Riteon Corp., LTd.

重型快卸销

Lifting handle Quick release pins



www.riteon.biz



- Lifting pin.
- Pin body available in:
Stainless steel
Alloy steel

重型手柄 / Lifting Handle Specifications-英制(Inch)

Diameter	ØA		+/-0.005 B	D	E
	Min	Max			
5/16	.3095	.3110	.375	1.460	1.200
3/8	.3720	.3735	.440	1.460	1.200
1/2	.4970	.4985	.594	1.560	1.480
5/8	.6220	.6235	.750	1.620	1.480

重型手柄 / Lifting Handle Specifications-公制(Metric)

插销 直径	ØA		+/-0.25 B	D	E
	最小	最大			
8	7.92	7.96	9.42	37.13	30.50
10	9.92	9.96	11.86	37.13	30.50
12	11.92	11.96	14.45	39.50	37.50
16	15.92	15.96	19.00	41.15	37.50

尺寸单位为毫米

江阴市瑞特昂五金机电有限公司 / Riteon Corp., LTD.

重型 / Lifting Pin Specifications-英制(Inch)

Diameter	Grip Length (Inch)												
	0.5	0.75	1	1.25	1.5	1.75	2	2.5	3	4	5	6	
件号 PART NUMBERS	不锈钢 Stainless Steel												
	3/16	18SFL05	18SFL075	18SFL10	18SFL125	18SFL15	18SFL175	18SFL20	18SFL25	18SFL30	18SFL40	18SFL50	18SFL60
	1/4	25SFL05	25SFL075	25SFL10	25SFL125	25SFL15	25SFL175	25SFL20	25SFL25	25SFL30	25SFL40	25SFL50	25SFL60
	5/16	31SFL05	31SFL075	31SFL10	31SFL125	31SFL15	31SFL175	31SFL20	31SFL25	31SFL30	31SFL40	31SFL50	31SFL60
	3/8	37SFL05	37SFL075	37SFL10	37SFL125	37SFL15	37SFL175	37SFL20	37SFL25	37SFL30	37SFL40	37SFL50	37SFL60
	7/16	43SFL05	43SFL075	43SFL10	43SFL125	43SFL15	43SFL175	43SFL20	43SFL25	43SFL30	43SFL40	43SFL50	43SFL60
	1/2	50SFL05	50SFL075	50SFL10	50SFL125	50SFL15	50SFL175	50SFL20	50SFL25	50SFL30	50SFL40	50SFL50	50SFL60
	9/16	56SFL05	56SFL075	56SFL10	56SFL125	56SFL15	56SFL175	56SFL20	56SFL25	56SFL30	56SFL40	56SFL50	56SFL60
	5/8	62SFL05	62SFL075	62SFL10	62SFL125	62SFL15	62SFL175	62SFL20	62SFL25	62SFL30	62SFL40	62SFL50	62SFL60
	3/4	75SFL05	75SFL075	75SFL10	75SFL125	75SFL15	75SFL175	75SFL20	75SFL25	75SFL30	75SFL40	75SFL50	75SFL60
	7/8	87SFL05	87SFL075	87SFL10	87SFL125	87SFL15	87SFL175	87SFL20	87SFL25	87SFL30	87SFL40	87SFL50	87SFL60
	1	100SFL05	100SFL075	100SFL10	100SFL125	100SFL15	100SFL175	100SFL20	100SFL25	100SFL30	100SFL40	100SFL50	100SFL60
	合金钢 Alloy Steel												
	3/16	18AFL05	18AFL075	18AFL10	18AFL125	18AFL15	18AFL175	18AFL20	18AFL25	18AFL30	18AFL40	18AFL50	18AFL60
	1/4	25AFL05	25AFL075	25AFL10	25AFL125	25AFL15	25AFL175	25AFL20	25AFL25	25AFL30	25AFL40	25AFL50	25AFL60
	5/16	31AFL05	31AFL075	31AFL10	31AFL125	31AFL15	31AFL175	31AFL20	31AFL25	31AFL30	31AFL40	31AFL50	31AFL60
	3/8	37AFL05	37AFL075	37AFL10	37AFL125	37AFL15	37AFL175	37AFL20	37AFL25	37AFL30	37AFL40	37AFL50	37AFL60
	7/16	43AFL05	43AFL075	43AFL10	43AFL125	43AFL15	43AFL175	43AFL20	43AFL25	43AFL30	43AFL40	43AFL50	43AFL60
	1/2	50AFL05	50AFL075	50AFL10	50AFL125	50AFL15	50AFL175	50AFL20	50AFL25	50AFL30	50AFL40	50AFL50	50AFL60
9/16	56AFL05	56AFL075	56AFL10	56AFL125	56AFL15	56AFL175	56AFL20	56AFL25	56AFL30	56AFL40	56AFL50	56AFL60	
5/8	62AFL05	62AFL075	62AFL10	62AFL125	62AFL15	62AFL175	62AFL20	62AFL25	62AFL30	62AFL40	62AFL50	62AFL60	
3/4	75AFL05	75AFL075	75AFL10	75AFL125	75AFL15	75AFL175	75AFL20	75AFL25	75AFL30	75AFL40	75AFL50	75AFL60	
7/8	87AFL05	87AFL075	87AFL10	87AFL125	87AFL15	87AFL175	87AFL20	87AFL25	87AFL30	87AFL40	87AFL50	87AFL60	
1	100AFL05	100AFL075	100AFL10	100AFL125	100AFL15	100AFL175	100AFL20	100AFL25	100AFL30	100AFL40	100AFL50	100AFL60	

Contact customer service for other sizes. Includes attachment ring.

重型 / Lifting Pin Specifications-公制(Metric)

插销直径	夹持长度(毫米)												
	10	15	20	25	30	40	50	60	70	80	90	100	
件号 PART NUMBERS	不锈钢 Stainless Steel												
	5	M5SFL10	M5SFL15	M5SFL20	M5SFL25	M5SFL30	M5SFL40	M5SFL50	M5SFL60	M5SFL70	M5SFL80	M5SFL90	M5SFL100
	6	M6SFL10	M6SFL15	M6SFL20	M6SFL25	M6SFL30	M6SFL40	M6SFL50	M6SFL60	M6SFL70	M6SFL80	M6SFL90	M6SFL100
	8	M8SFL10	M8SFL15	M8SFL20	M8SFL25	M8SFL30	M8SFL40	M8SFL50	M8SFL60	M8SFL70	M8SFL80	M8SFL90	M8SFL100
	10	M10SFL10	M10SFL15	M10SFL20	M10SFL25	M10SFL30	M10SFL40	M10SFL50	M10SFL60	M10SFL70	M10SFL80	M10SFL90	M10SFL100
	12	M12SFL10	M12SFL15	M12SFL20	M12SFL25	M12SFL30	M12SFL40	M12SFL50	M12SFL60	M12SFL70	M12SFL80	M12SFL90	M12SFL100
	16	M16SFL10	M16SFL15	M16SFL20	M16SFL25	M16SFL30	M16SFL40	M16SFL50	M16SFL60	M16SFL70	M16SFL80	M16SFL90	M16SFL100
	20	M20SFL10	M20SFL15	M20SFL20	M20SFL25	M20SFL30	M20SFL40	M20SFL50	M20SFL60	M20SFL70	M20SFL80	M20SFL90	M20SFL100
	25	M25SFL10	M25SFL15	M25SFL20	M25SFL25	M25SFL30	M25SFL40	M25SFL50	M25SFL60	M25SFL70	M25SFL80	M25SFL90	M25SFL100
	合金钢 Alloy Steel												
	5	M5AFL10	M5AFL15	M5AFL20	M5AFL25	M5AFL30	M5AFL40	M5AFL50	M5AFL60	M5AFL70	M5AFL80	M5AFL90	M5AFL100
	6	M6AFL10	M6AFL15	M6AFL20	M6AFL25	M6AFL30	M6AFL40	M6AFL50	M6AFL60	M6AFL70	M6AFL80	M6AFL90	M6AFL100
	8	M8AFL10	M8AFL15	M8AFL20	M8AFL25	M8AFL30	M8AFL40	M8AFL50	M8AFL60	M8AFL70	M8AFL80	M8AFL90	M8AFL100
	10	M10AFL10	M10AFL15	M10AFL20	M10AFL25	M10AFL30	M10AFL40	M10AFL50	M10AFL60	M10AFL70	M10AFL80	M10AFL90	M10AFL100
	12	M12AFL10	M12AFL15	M12AFL20	M12AFL25	M12AFL30	M12AFL40	M12AFL50	M12AFL60	M12AFL70	M12AFL80	M12AFL90	M12AFL100
16	M16AFL10	M16AFL15	M16AFL20	M16AFL25	M16AFL30	M16AFL40	M16AFL50	M16AFL60	M16AFL70	M16AFL80	M16AFL90	M16AFL100	
20	M20AFL10	M20AFL15	M20AFL20	M20AFL25	M20AFL30	M20AFL40	M20AFL50	M20AFL60	M20AFL70	M20AFL80	M20AFL90	M20AFL100	
25	M25AFL10	M25AFL15	M25AFL20	M25AFL25	M25AFL30	M25AFL40	M25AFL50	M25AFL60	M25AFL70	M25AFL80	M25AFL90	M25AFL100	

需要其他公制尺寸请联系客户服务部门。产品包含开口环

江阴市瑞特昂五金机电有限公司 / Riteon Corp., LTD.

系索 Lanyard Specifications & Styles

系索规格:

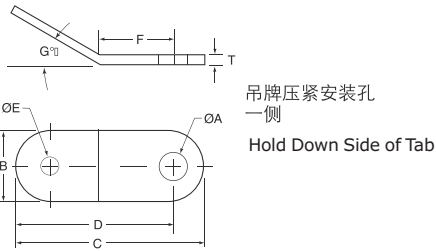
- 碳钢镀锌, 304不锈钢钢索, 尼龙外套
- 钢索直径1.6-2.0mm; 含外套直径可达3.2mm
- 有Mil-DTL-83420军用型钢制系索可供选择
- 可订制特殊规格

Lanyard Specifications

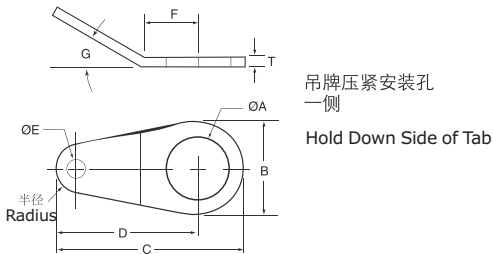
Carbon Steel, 304 Stainless Steel cable, 1/16"(1.59mm), with nylon jacket, 1/8"(3.18mm), meets Mil-DTL-83420.

Other cable diameters, other jacket and special configuration styles by special order.

椭圆形不锈钢吊牌 Stainless Oval Tab

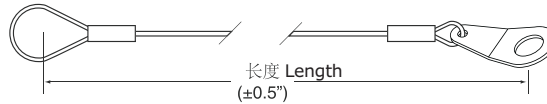


圆形不锈钢吊牌 Stainless Steel Round Tab



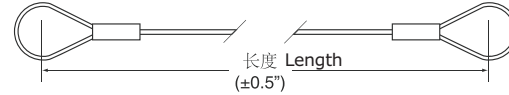
环/吊牌型 Standard (W/Tab)

(图. 1)



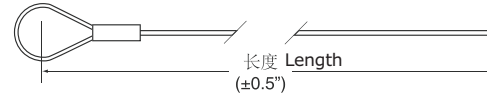
双环型 Standard (2 Loops)

(图. 2)



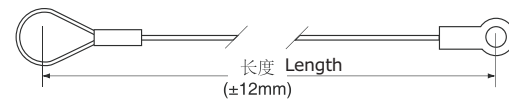
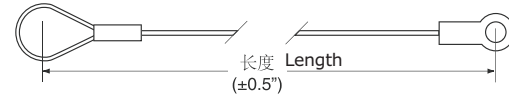
单环型 Standard (1 Loops)

(图. 3)



环/眼型 Loop/Eyelet, Stainless Steel

(图. 4)



江阴市瑞特昂五金机电有限公司 / Riteon Corp., LTD.



欲了解更多信息或订制特殊尺寸请致电或电邮我们，谢谢！

For get more info or others specification, please call us or send E-mail to us. Thanks!

江阴市瑞特昂五金机电有限公司 / Riteon Corp., LTd.