

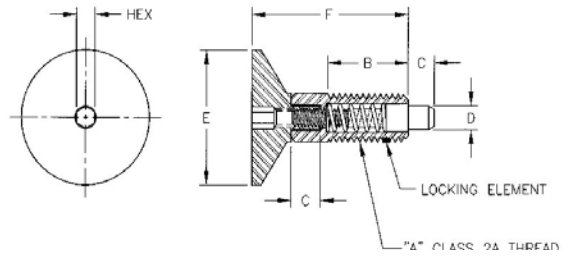
料号 P/N#: SSHP-14-01-NLT-LE

有自锁功能 Locking Type: -LT

无自锁功能 Non Locking Type:-NLT

有锁紧成分 Locking Element: -LE

无锁紧成分 Non Locking Element: -NLE



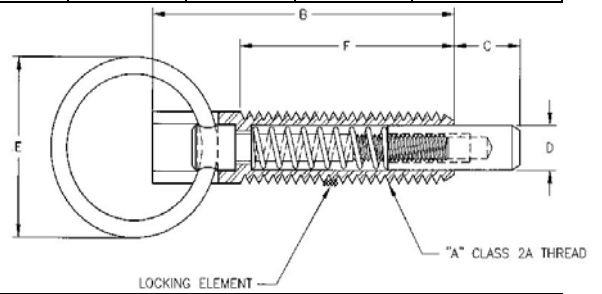
料号 Part Number		作用力 End Pressure (lbs.)		牙型 Thread A	B	C	D	E	F	六角 HEX H
环保铁 Steel	不锈钢 Stainless	起始 Start	结束 Final							
SHP-14-01	SSHP-14-01	1	4	1/4-20	0.400	0.125	0.123	0.750	0.805	0.125
SHP-516-02	SSHP-516-02	1	6	5/16-18	0.530	0.187	0.154	0.875	1.070	0.125
SHP-38-03	SSHP-38-03	1	8	3/8-16	0.750	0.220	0.185	1.000	1.260	0.218
SHP-12-04	SSHP-12-04	1	10	1/2-13	0.650	0.250	0.248	1.250	1.380	0.250

Pull Ring Locking Plungers

料号 P/N#: SSRN-01-NLE

有锁紧成分 Locking Element: -LE

无锁紧成分 Non Locking Element: -NLE



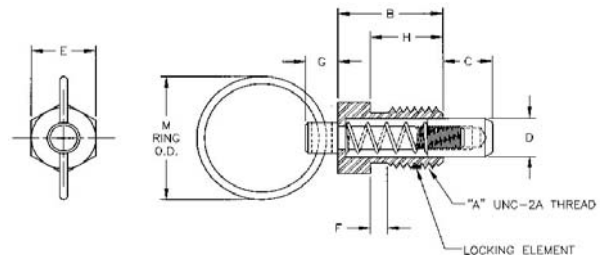
料号 Part Number			作用力 End Pressure (lbs.)		Thread A	Thread Length H	Body Length B	Nose Length C	Nose Dia D	Ring Dia F
环保铁 Steel	不锈钢 Stainless	环保铜 Brass	起始 Start	结束 Final						
SPRN-01	SSPRN-01	BPRN-01	1.00	2.50	1/4-20	0.80	1.14	0.250	0.155	7/8
SPRN-02	SSPRN-02	BPRN-02	2.00	4.00	3/8-16	1.20	1.68	0.375	0.233	7/8
SPRN-03	SSPRN-03	BPRN-03	2.50	5.00	1/2-13	1.40	2.00	0.500	0.312	1
SPRN-04	SSPRN-04	BPRN-04	3.00	6.00	5/8-11	2.27	3.35	0.550	0.312	1-1/4
SPRN-05	SSPRN-05	BPRN-05	5.00	10.00	3/4-10	2.69	4.06	0.650	0.430	1-3/8
SPRN-06	SSPRN-06	BPRN-06	8.00	20.00	1-8	3.25	4.63	0.900	0.680	1-3/8

Pull Ring Non Locking Indexing Pin

料号 P/N#: SSPR-01-LE

有锁紧成分 Locking Element: -LE

无锁紧成分 Non Locking Element: -NLE



料号 Part Number			作用力 End Pressure (lbs.)		A	B	C	D*	E	F	G	H	M Ring OD
环保铁 Steel	不锈钢 Stainless	环保铜 Brass	起始 Start	结束 Final									
SPR-01	SSPR-01	BPR-01	0.50	2.00	1/4-20	7/16	3/16	0.156	7/16	9/32	5/32	9/32	3/4
SPR-02	SSPR-02	BPR-02	0.75	3.00	3/8-16	5/8	9/32	0.250	5/8	7/16	3/16	7/16	3/4
SPR-03	SSPR-03	BPR-03	1.00	4.00	1/2-13	13/16	3/8	0.312	13/16	9/16	1/4	9/16	1
SPR-04	SSPR-04	BPR-04	1.25	5.00	5/8-11	1	7/16	0.375	1	11/16	5/16	11/16	1